

hsICM
hsIE

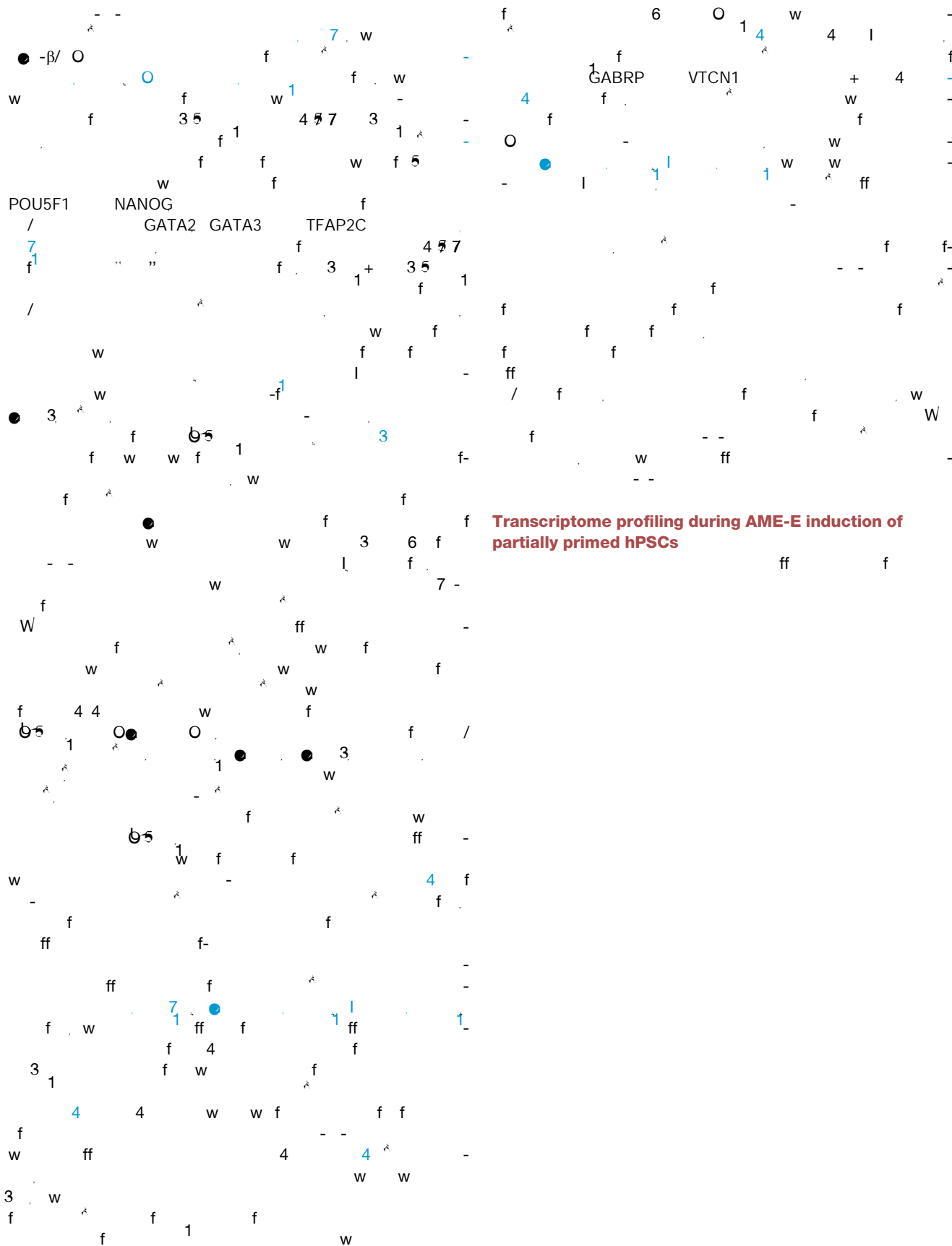
Xiang et al.,
2020

hsProEPI
hsPostEPI-E1
hsPostEPI-E2

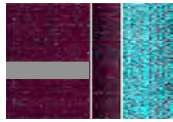
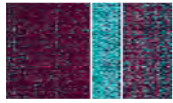
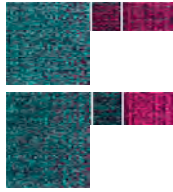
Ma et al.,
2019

Tyser et al.,
2021





Transcriptome profiling during AME-E induction of partially primed hPSCs



w w f -
f w
3 f ff -
w f
-3 4 4 O -
-3 w f
6 3 -3
f f 1
7. 56 l - f
w f 5 36 1
33 - w w 3 4 5
34. f f 1
f f
w f
in vitro -3 f
ff f
1

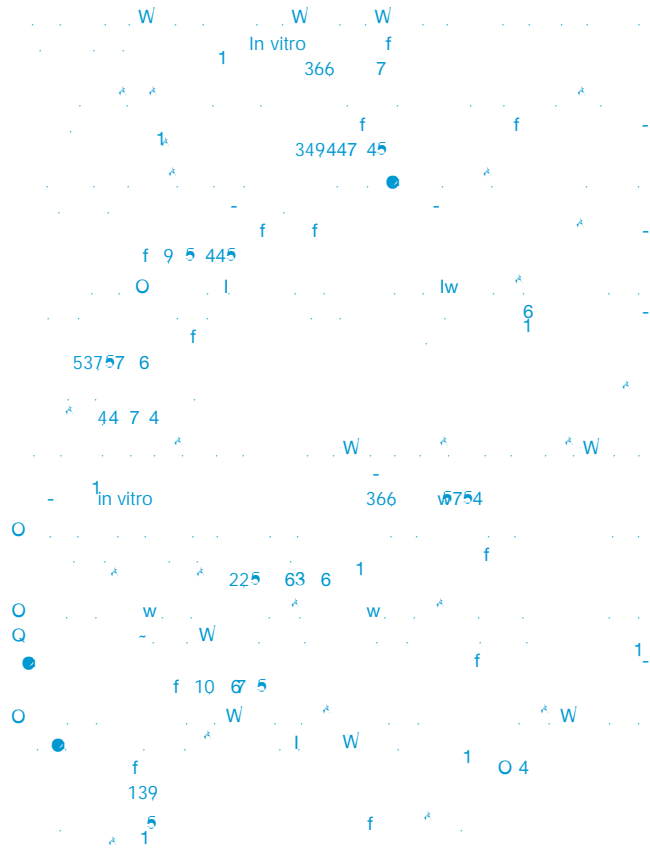
hPSC-derived AME-E-like and AME-L-like cells

f			f	-					
	w	-3		w					
w	f			w					
			f		in vitro	ff			
	w			w	w				
3	ff		W			f			
	f	4 3		f 4	7 % w				
	6		w	1					
CGB3	CGB5	CGA	S100P	f		w			
f				f					
f					in vitro				
	w	f	ff					f	
	f								
	-w								
f				w		f			
	5		f			w			
				6		6			



d





RESOURCE AVAILABILITY

Lead contact

f - f w f .

4 ° w w ff w - 33356 ff - 4 w - 6 f 3
11 w w ff 5 % f 1 4 ° 6 # 6 55 1 w

Immunofluorescence

w -w 6 l l l 4 -w f
- - w w f f f f f f f 3
w w 4 % f f 5 f w w w w w 5 %
- 1 f 1 f w w 1 w w w 3 %
1 % 1 w - 1 f 3 w f l w

Q 4 w w Q TM 4
Q 6 f w w l 6 Q w f w -
f - 1 7 w 1 w 3 1 3' 3
f w 1 % f f w 5 65 3 1 5 % w 1 f w
1 % f f w 5 65 3 1 5 % w 1 f 6

QUANTIFICATION AND STATISTICAL ANALYSIS